



**HAVELLS**

**enviro**  
HARNESSING LIGHT. HARVESTING ENERGY.

**LET THE SUN POWER  
YOUR BUSINESS**



**Havells  
Commercial and Industrial  
Solar Grid-Tie Inverter  
20 kW to 60 kW**

**10 YEARS  
WARRANTY**



## Introduction of

# Havells

Havells India Limited is a leading Fast Moving Electrical Goods (FMEG) Company and a major power distribution equipment manufacturer with a strong global presence. Havells enjoys enviable market dominance across a wide spectrum of products, including Industrial & Domestic Circuit Protection Devices, Cables & Wires, Motors, Fans, Modular Switches, Home Appliances, Air Conditioners, Electric Water Heaters, Power Capacitors, CFL Lamps, Luminaires for Domestic, Commercial and Industrial Applications.

Today, Havells owns some of the most prestigious brands like Havells, Lloyd, Crabtree, Standard and Promptec. Its network constitutes of 4000 professionals, over 7575 dealers and 40 branches in the country. Our products are available in 40 countries. The company has twelve state-of-the-art manufacturing plants in India located at Haridwar, Baddi, Sahibabad, Faridabad, Assam, Alwar and Neemrana, manufacturing globally acclaimed products, synonymous with excellence and precision in the electrical industry.

The company pioneered the concept of exclusive brand showroom in the electrical industry with 'Havells Galaxy'. Today over 415 Havells Galaxies across the country are helping customers, both domestic and commercial, to choose from a wide variety of products for different applications. Havells became the first FMEG Company to offer door step service via its initiative 'Havells Connect'. Thanks to the quality of products and quicker service, it has minimum customer complaints and highest customer satisfaction.

Today, Havells along with its brands, have earned the distinction of being the preferred choice of electrical products for discerning individuals and industrial consumers both in India and abroad. Havells offers same quality products for both Indian and International markets. It is committed to keep powering the world with its state-of-the-art innovations and energy-efficient solutions. Currently over 90% of its product offerings are energy efficient and manufactured in-house.

Social and environmental responsibility has been at the forefront of Havells Operating Philosophy and as a result the company consistently contributes to socially responsible activities. For instance, the company is providing mid-day meal in government schools in Alwar district, covering more than 57000 students per day. The group company, QRG Healthcare runs a 140 bed hospital in Faridabad. In the past, the company has generously contributed to the society during various national calamities like the Bihar Flood, Tsunami and Kargil National Relief Fund, etc.

The essence of Havells' success lies in the expertise of its fine team of professionals, strong relationships with associates and the ability to adapt quickly & efficiently, coupled with the vision to always think ahead.





## THREE PHASE INVERTER, MPPT, DC Switch & Wi-Fi

Enviro GTi 20000TD - 20 kW | Enviro GTi 30000TD - 30 kW | Enviro GTi 33000TD - 33 kW  
Enviro GTi 50KT - 50 kW | Enviro GTi 60KT - 60 kW

## FEATURES

- 10 years warranty
- Wide Input Voltage Range
- Maximum 98.6% Inverter Efficiency
- Inbuilt DC Switch.
- In-Built 25 Year Data Storage Capability
- Remote Monitoring – free for 25 years
- 4" LCD display
- Detachable cover for easy installation & maintenance
- Safety Protection- Anti islanding, Ground Fault monitoring
- Anti Reverse Power Controller - zero export (Optional)
- IEC Certification - As per MNRE

# TECHNICAL SPECIFICATION OF THREE PHASE SOLAR GRID TIE INVERTER

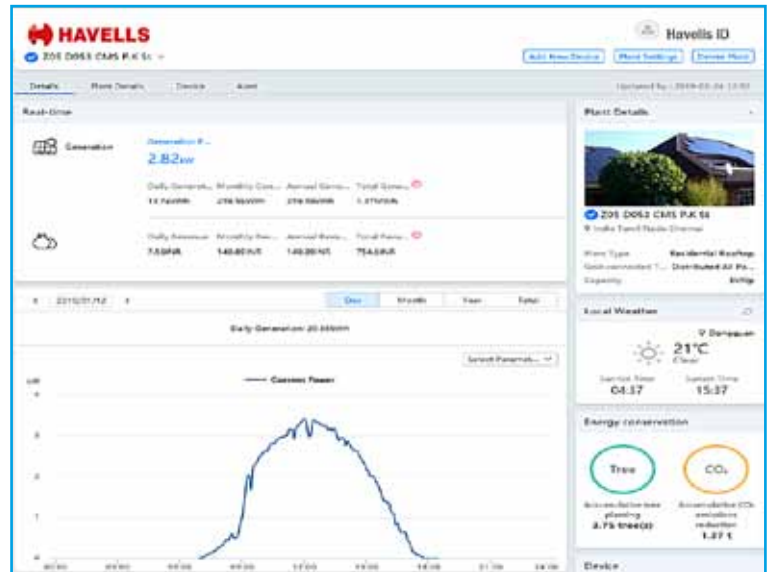
DATASHEET	ENVIRO GTI 20000TD	ENVIRO GTI 30000TD	ENVIRO GTI 33000TD
<b>Input (DC)</b>			
Max. Input Power	26000 W	39000 W	42900 W
Max DC Power for Single of MPPT	13000 W	18000 W	20000 W
Number of independent MPPT	2		
Number of DC Inputs	2 for each MPPT	3 for each MPPT	
Max. input voltage	1100 V		
Start-up input voltage	250 V (+/-1 V)		
Rated input voltage	620 V		
MPPT voltage range	230 V - 960 V		
Full load DC voltage range	480 V - 850 V	520 V - 850 V	580 V - 850 V
Max. input current	24 A / 24 A	30 A / 30 A	30 A / 30 A
<b>Output (AC)</b>			
Rated Power (@230 V, 50 Hz)	20000 W	30000 W	33000 W
Max. AC Power	22000 VA	33000 VA	36300 VA
Max. Output Current	32 A	48 A	53 A
Nominal Grid Voltage	3/N/PE, 230 V / 400 Vac		
Grid Voltage Range	310 Vac - 480 Vac		
Nominal Frequency	50 Hz / 60 Hz		
Grid Frequency Range	45 Hz ~ 55 Hz / 55 Hz ~ 65 Hz (According to local standard)		
Active power adjustable range	0~100%		
THDi	<3%		
Power factor	1 ( adjustable +/-0.8)		
<b>Performance</b>			
Max. efficiency	98.2%	98.4%	98.6%
European weighted efficiency	98.0%	98.2%	98.2%
Self-consumption at night	<1 W		
Feed-In start power	45 W		
MPPT efficiency	>99.9%		
<b>Protection</b>			
DC Reverse Polarity Protection	Yes		
DC switch	Yes		
Protection class / overvoltage category	I/III		
Safety protection	Anti islanding, RCMU, Ground fault monitoring		
Certification	IEC 62116, IEC 61727, IEC 61683, IEC 60068 (1,2,14,30), IEC 62109-1/2, IEC 61000.		
ARPC	Anti Reverse Power Controller (optional)		
<b>Communication</b>			
Power management unit	According to certification and request		
Standard Communication Mode	RS485, Wifi, GPRS (optional) SD Card, Multi-function relay		
Operation Data Storage	25 years		
<b>General Data</b>			
Ambient temperature range	-25 °C...+60 °C		
Topology	Transformerless		
Degree of Protection	IP65		
Allowable relative humidity range	0-100% no condensing		
Max. operating altitude	<2000 M		
Noise	<30 dB	<45 dB	<45 dB
Weight	37 kg		
Cooling	Natural	Fan	Fan
Dimension	666 mm x 512 mm x 254 mm		
Display	LCD display		
Warranty	10 years		

# TECHNICAL SPECIFICATION OF THREE PHASE SOLAR GRID TIE INVERTER

DATASHEET	ENVIRO GTI 50KT	ENVIRO GTI 60KT
<b>Input (DC)</b>		
Max. Input Power	55000 W	66000 W
Max DC Power for Single of MPPT	22000 W ( 500 V - 800 V )	22000 W ( 530 V - 800 V )
Number of independent MPPT	3	
Number of DC Inputs	4 / 3 / 3	4 / 4 / 4
Max. input voltage	1000 V	
Start-up input voltage	350 V	
Rated input voltage	600 V	600 V
MPPT voltage range	250 V - 960 V	
Full load DC voltage range	500 V - 800 V	530 V - 800 V
Max. input MPPT current	40 A / 30 A / 30 A	40 A / 40 A / 40 A
Max. input current per string	12 A	
<b>Output (AC)</b>		
Rated Power (@230 V, 50 Hz)	50000 W	60000 W
Max. AC Power	50000 VA	60000 VA
Max. Output Current	80 A	90 A
Nominal Grid Voltage	3/N/PE, 3/P E, 230 V / 400 V ac	
Grid Voltage Range	180 Vac - 270 Vac	
Nominal Frequency	50 Hz / 60 Hz	
Grid Frequency Range	45 Hz ~ 53 Hz	
Active power adjustable range	0~100%	
THDi	<3%	
Power factor	1 ( adjustable +/-0.8)	
<b>Performance</b>		
Max. efficiency	98.5%	98.6%
European weighted efficiency	98.3%	98.4%
Self-consumption at night	<1 W	
Feed-In start power	45 W	
MPPT efficiency	>99.9%	
<b>Protection</b>		
DC reverse polarity protection	Yes	
DC switch	Yes	
Protection class / overvoltage category	I/III	
Input/output SPD (II)	Optional	
Safety protection	Anti islanding, RCMU, Ground fault monitoring	
Certification	IEC 62116, IEC 61727, IEC 61683, IEC 60068 (1,2,14,30), IEC 62109-1/2, IEC 61000.	
SPD	MOV : Type III standard / Type II optional	
ARPC	Anti Reverse power controller (optional)	
<b>Communication</b>		
Power management unit	According to certification and request	
Standard Communication Mode	RS485, Wifi (optional), SD Card, Multi-function relay	
Operation Data Storage	25 years	
<b>General Data</b>		
Ambient temperature range	-25 °C...+60 °C	
Topology	Transformerless	
Degree of Protection	IP65	
Allowable relative humidity range	0-100% no condensing	
Max. operating altitude	4000 m	
Noise	<60 dB	<60 dB
Weight	68 kg	70 kg
Cooling	Fan	
Dimension	737 mm x 713 mm x 297 mm	
Display	LCD display	
Warranty	10 years	

## FEATURES

- Web based Remote monitoring
- User-friendly & easy access via Internet
- Real Time Data-logging and historical data storage for analysis
- Data available with various graph and format options for easy understanding and analysis
- Automatic alarms for any malfunctions via Email or SMS



### REGIONAL & BRANCH OFFICES:

**NORTH - REGIONAL OFFICE:** Corporate Office: QRG Towers, 2D, Sector-126, Expressway, Noida-201304, Tel: 0120-3331000, **Delhi:** Tel: 011-47676700, 23888200, **Chandigarh:** Tel: 0172-4232400-401, **Dehradun:** Tel: 0135-6670202, **Noida / Haryana:** Tel: 0120-3331000, **Ludhiana:** Tel: 0161-4676000 / 24, **Jammu:** Tel: 0191-2478330, 2479330, **Sri Nagar:** Tel: 0194-2490431, **Jaipur:** Tel: 0141-3914645, 3988210 **Jodhpur:** Tel: 0291-9214201640 / 45, **Lucknow:** Tel: 0522-6672100, **Kanpur:** Tel: 0512-6710400, 6710409

**EAST - REGIONAL OFFICE:** **Kolkata:** ICC Tower, 5th Floor, 4 India Exchange Place, Kolkata-700001, Tel: 033-40129851 / 52, **Bhubaneswar:** Tel: 0674-6668101/102/103/104, **Guwahati:** Tel: 0361-2134521, 2458923, 2460355, **Siliguri:** Tel: 0353-2525907, **Ranchi:** 0651-2244861, 2244862, 2244864, 2244868, 2244869, **Jamshedpur:** Tel: 0657-6542492, 09234369436, **Patna:** Tel: 0612-2207221, 2207222, 2207223, 2655518

**WEST - REGIONAL OFFICE:** **Mumbai:** 1271, Solitaire Corporate Park, Bldg. No. 12, 7th Floor, Andheri - Ghatkopar Link Road, Chakala, Andheri (East), Mumbai- 400093. Ph.: 022 - 67298600-602, **Ahmedabad:** Tel: 079-40061111, 40060738-740, **Indore:** Tel: 0731-2572340-41, 4009998 (Airtel), **Rajkot:** Tel: 0281-2481112, 2921212, **Nagpur:** Tel: 0712-2240932, 2242692, 2242699 **Pune:** Tel: 020-64016413 / 14, **Raipur:** Tel: 0771-4243400 / 01, **Surat:** Tel: 0261-2350137, 9979890137, **Jabalpur:** Tel: 0761-4064491

**SOUTH - REGIONAL OFFICE:** **Chennai:** Sigapi Achi Building, No. 18 / 3, 6th Floor, Rukmani Lakshmiipathy Road, Egmore, Chennai-600008, Tel: 044-42280600, 605, **Bangalore:** Tel: 080-49075000, **Coimbatore:** Tel: 0422-4550200, 2305199, 2306199, **Hyderabad:** Tel: 040-27533372, 27533355, 27533632, 66320407/0408/6401/6402, **Kochi:** Tel: 0484-4099000, **Vizag:** Tel: 0891-6514339, **Vijayawada:** Tel: +91-9247058847/57, **Calicut:** 0495-4019194, **Madurai:** 0452-4267022, **Trivandrum:** 0471-4015323, **Hubli:** 09448146028, **Trichy:** 09944460160

Representative Offices: • Goa • Solapur • Gwalior • Kathmandu • Bhopal

Actual products may vary in colour, design, description and colour combination etc.  
Although every effort has been made to ensure accuracy in the compilation of the technical detail within this publication. Specifications & performance data are constantly changing.  
Current details should therefore be checked with Havells Group.  
"Copyright Subsists. Imitation of trade dress, graphics and color scheme of this document is a punishable offence."



# HAVELLS

**Havells India Ltd.**

QRG Towers, 2D, Sector -126, Expressway, Noida - 201 304 (UP), Ph. +91-120-3331000,

E-mail: [marketing@havells.com](mailto:marketing@havells.com), [www.havells.com](http://www.havells.com)

Consumer Care No.: 1800 11 0303, 1800 103 1313 (All Connections), 011-4166 0303 (Landline)

Join us on Facebook at [www.facebook.com/havells](http://www.facebook.com/havells) and share your ways to save the planet!

**CIN - L31900DL1983PLC016304.**

Scan the QR Code  
to download  
Havells mCatalogue

