

Havells Enviro GTi

Web Monitoring Manual

Website

- For Customer – Wi-Fi
“pvcheck.havells.com”



GRID TIE STRING INVERTERS (GTI)

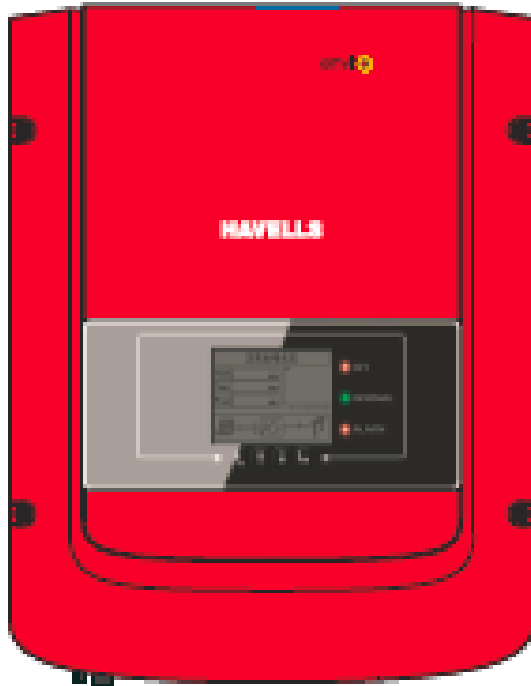


- Introducing a new range of Residential Havells Inverter
- State of the art string base inverter
- Single Phase Residential Inverters - 1.1 kW to 5kW / Single and Dual MPPT
- Three Phase Residential & Small Commercial Inverters – 5.5 kW to 11kW
- Three Phase Commercial Inverters – 15 kW to 70 kW
- 7 years standard warranty
- Equipped with standard WIFI communication
- Inverters are equipped with 25 year data storage capability
- Real time MPPT for maximum generation
- Wide input voltage range

Enviro GTi Product Range

Sr. No.	Model	Description	Application
1.	Enviro GTi 1kW – 3 kW	Single Phase Inverter, Single MPPT, Wi-Fi Standard	Single Phase for Residential Building
2.	Enviro GTi 3 kW – 6 kW	Single Phase Inverter, Dual MPPT, G-2 Model , Wi-Fi Standard	Three phase for industrial/commercial building
3.	Enviro GTi 4 kW – 12 kW	Three Phase Inverter, Dual MPPT, DC Switch Standard, Wi-Fi Standard	Three phase for commercial projects
4.	Enviro GTi 15 kW		
5.	Enviro GTi 20 kW – 33 kW		
6.	Enviro GTi 50 kW – 70 kW		

Enviro GTi Product Range



Enviro GTi 1100 , 2200, 3000
Single Phase



Enviro GTi 4000D , 5000D,
6000D
Single Phase

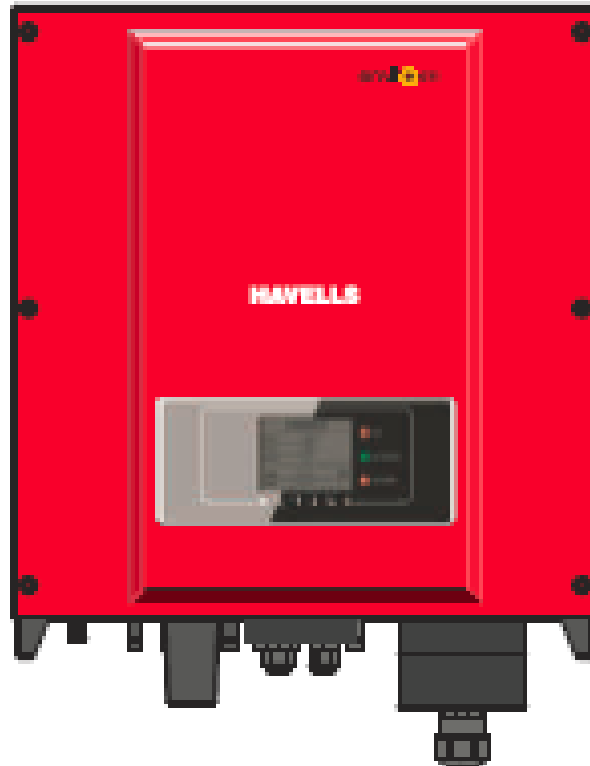


Enviro GTi 5500TX , 6600TX, 8800TX,
11000TX
Three Phase

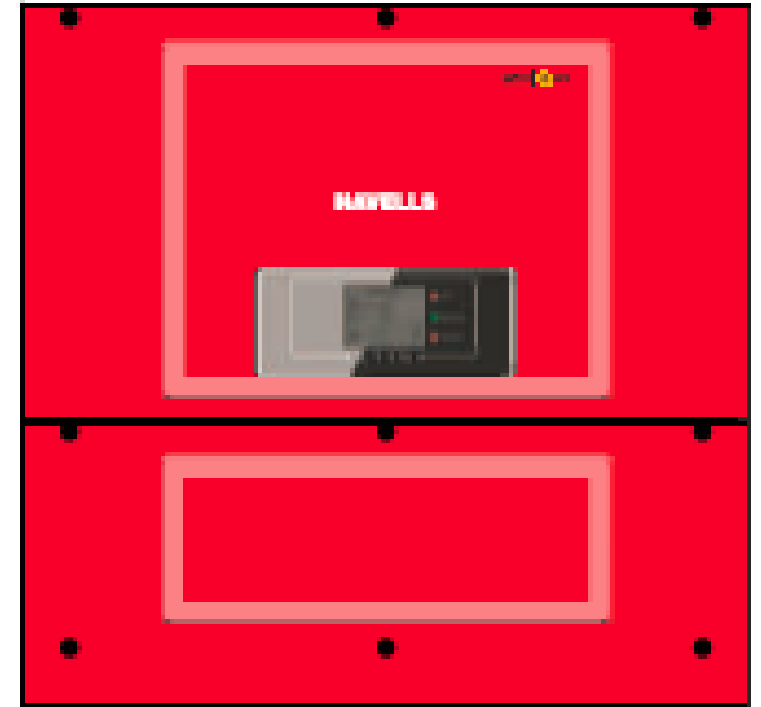
Enviro GTi Product Range



Enviro GTi 15000T
Three Phase



Enviro GTi 20000TD, 25000TD,
30000TD, 33000TD
Three Phase



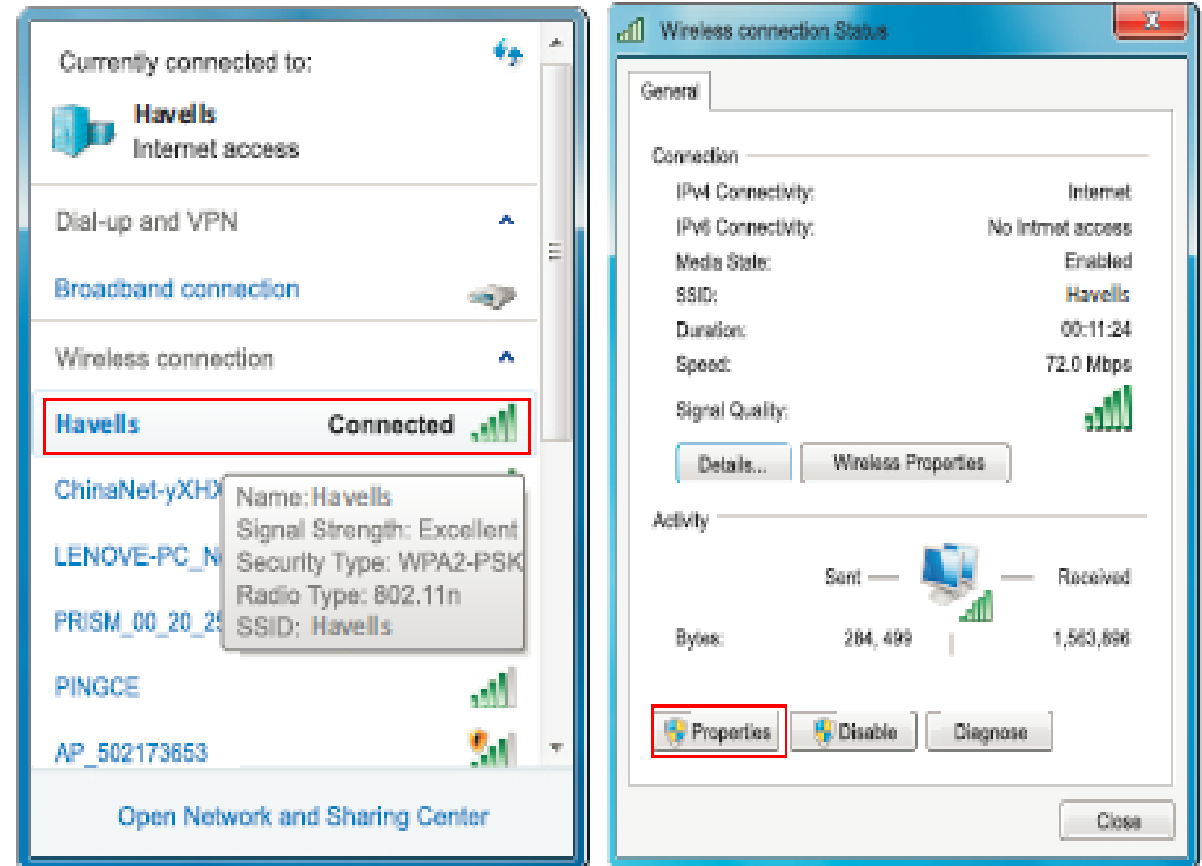
Enviro GTi 50KT, 60KT, 70KT
Three Phase

Enviro GTi Product Range

Sr. No.	Model/ Configure	MPPT NO.	String No.	DC Switch	Build-in DC SPD	Build-in AC SPD	Communication
1.	Enviro GTi 1kW – 3 kW Single Phase	1	1	Optional	None	None	On board WIFI,485
2.	Enviro GTi 3 kW – 6 kW Single Phase	2	2	Optional	None	None	External WIFI,485
3.	Enviro GTi 4 kW – 12 kW Three Phase	2	2	Standard	None	None	External WIFI/GPRS,485
4.	Enviro GTi 15 kW Three Phase	2	4	Standard	Optional	Optional	External WIFI/GPRS,485
5.	Enviro GTi 20 kW – 33 kW Three Phase	2	6 (20kW-4)	Standard	None	None	External WIFI/GPRS,485
6.	Enviro GTi 50 kW – 70 kW Three Phase	3	12(50kW-10)	Standard	Standard	Optional	External WIFI/GPRS,485

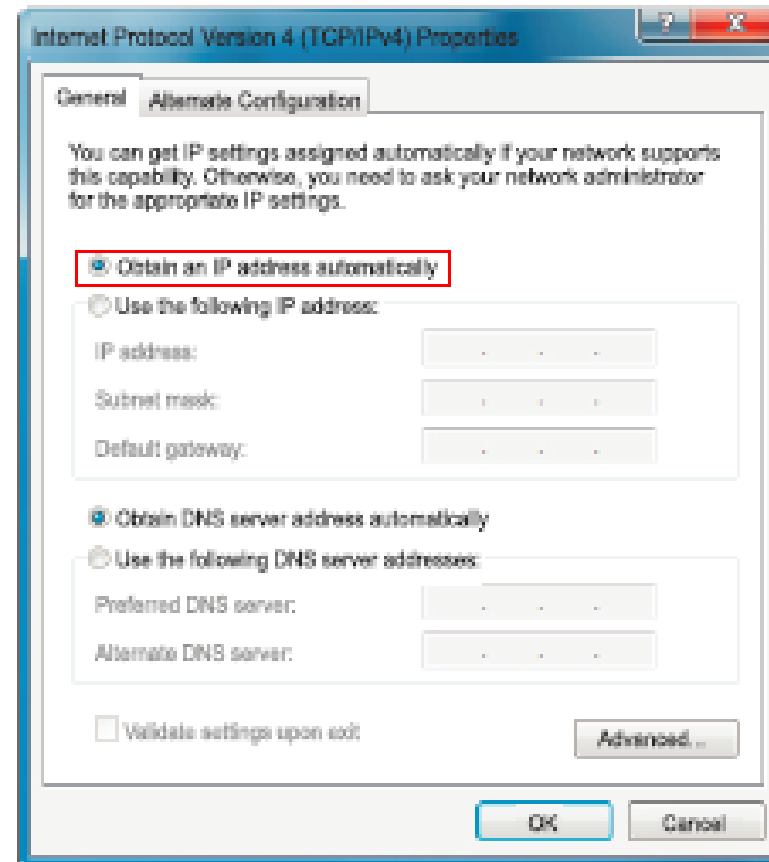
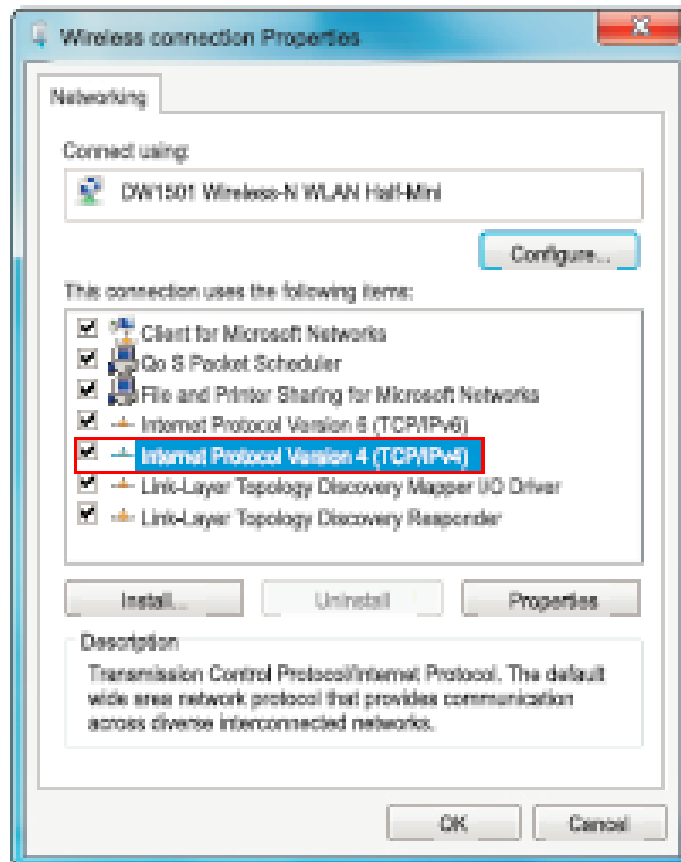
Wi-Fi Configuration

- Prepare a Laptop or device, e. g tablet or smart Phone that enables Wi-Fi
- Obtain an IP address automatically
- Procedure
 - Step 1 : click on Wi-Fi
 - Step 2 : connect with your personal internet access point or WLAN
 - Step 3 : Right click on your connected AP click in status > properties to open the wireless network property setup window



Wi-Fi Configuration

Step 4 : Double click on internet Protocol Version 4 (TCP/IPv4). Click on General > obtain an IP address automatically > OK to finish the Setup.



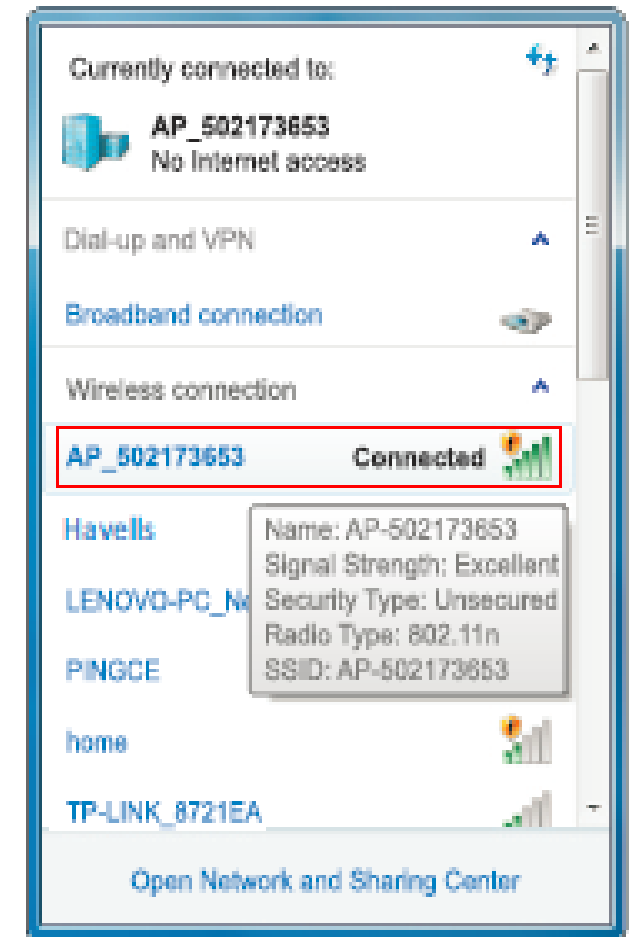
Enviro GTi Wi-Fi Setup

Procedure

Step 1 : Click on Wi-Fi

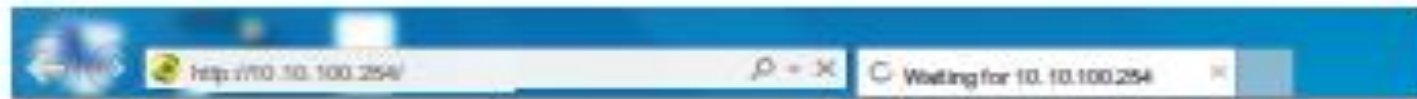
Step 2 : Connect with Havells Inverter Wi-Fi Module, defaulted with no password and its name started as AP_ and a following 9- digit Wi-Fi serial number. See Figure

AP_502173653



Procedure

Step 3 : when connected open browser (IE is recommended) , head to <http://10.10.100.254/> , and fill in user name and password which all defaulted as **admin** for the first time.



Procedure

Step 4 : when successfully logged in, user can find the basic information on their inverter Wi-Fi Module

	^ Device information
Staus	Device serial number 502173653
Wizard	Firmware version H4L01.43Y4.0.01W1.0.13(2014-07-161-S)
Wireless	Wireless SP mode Enable
Cable	SSID AP_502173653
Advanced	IP address 10.10.100.254
Account	MAC address 00:95:69:1A:33:30
Update	Wireless STA mode Enable
Restart	Router SSID Havelis
Reset	Signal Quality 0%
	IP address 0.0.0.0
	MAC address 00:95:69:1A:33:31
	Cable mode Enable
	IP address 0.0.0.0
	MAC address 00:95:69:1A:33:31
	v Connected Inverter

Procedure

Step 5 : Please Click in Wizard > Start to Start the detailed setup on your inverter Wi-Fi module

Step 6 : Select Wireless connection and click Next

Status	<p>Dear users:</p> <p>Thank you for choosing our device. Next, you can follow the setup wizard to complete the network setting step by step; or you can select the left menu for detailed setting.</p> <p>★ Note: Before setting, please make sure that your wireless or cable network is working.</p> <p>Start</p>
Wizard	
Wireless	
Cable	
Advanced	
Account	
Update	
Restart	
Reset	

1 2 3 4 5 6 7

Status	<p>Connection Settings:</p> <p>@Wireless connection</p> <p>○ Cable connection Wireless <input checked="" type="checkbox"/> Enabled</p> <p>Back Next</p>
Wizard	
Wireless	
Cable	
Advanced	
Account	
Update	
Restart	
Reset	

1 2 3 4 5 6 7

Step 8 : Please enter your personal wireless network password. Then click next.

Status

Wizard

Wireless

Cable

Advanced

Account

Update

Restart

Reset

Please enter the wireless network password:

Password(1-32 bytes)
(Note: case sensitive)

Re-enter password

☐ Show Password

Back

Next

1

2

3

4

5

6

7

Procedure

Step 9 : Select Enable > Next to obtain IP address automatically

Step 10 : Click next.

Status	<p>Please fill in the following information:</p> <p>Obtain an IP address automatically <input type="button" value="Enable"/></p> <p>IP address <input type="text" value="0.0.0.0"/></p> <p>Subnet mask <input type="text" value="0.0.0.0"/></p> <p>Gateway address <input type="text" value="0.0.0.0"/></p> <p>DNS server address <input type="text"/></p> <p><input type="button" value="Back"/> <input type="button" value="Next"/></p> <p>1 2 3 4 5 6 7</p>
Wizard	
Wireless	
Cable	
Advanced	
Account	
Update	
Restart	
Reset	

Status	<p>Enhance Security</p> <p>You can enhance your system security by choosing the following methods</p> <p>Hide AP <input type="checkbox"/></p> <p>Change the encryption mode for AP <input type="checkbox"/></p> <p>Change the user name and password for Web server <input type="checkbox"/></p> <p><input type="button" value="Back"/> <input type="button" value="Next"/></p> <p>1 2 3 4 5 6 7</p>
Wizard	
Wireless	
Cable	
Advanced	
Account	
Update	
Restart	
Reset	

Procedure

Step 11 : Click OK to wait for setting complete.

Staus	<p>Setting complete!</p> <p>Click OK, the settings will take effect and the system will restart immediately.</p> <p>If you leave this interface without clicking OK, the settings will be ineffective.</p> <p>Back OK</p> <p>1 2 3 4 5 6 7</p>
Wizard	
Wireless	
Cable	
Advanced	
Account	
Update	
Restart	
Reset	

Staus	<p>Setting complete! Please close this page manually!</p> <p>Please login our management portal to monitor and manage your PV system.(Please register an account if you do not have one.)</p> <p>To re-login the configuration interface, please make sure that your computer or smart phone and our device are in the same network segment, and enter the new IP address of the device to access the interface.</p> <p>1 2 3 4 5 6 7</p>
Wizard	
Wireless	
Cable	
Advanced	
Account	
Update	
Restart	
Reset	

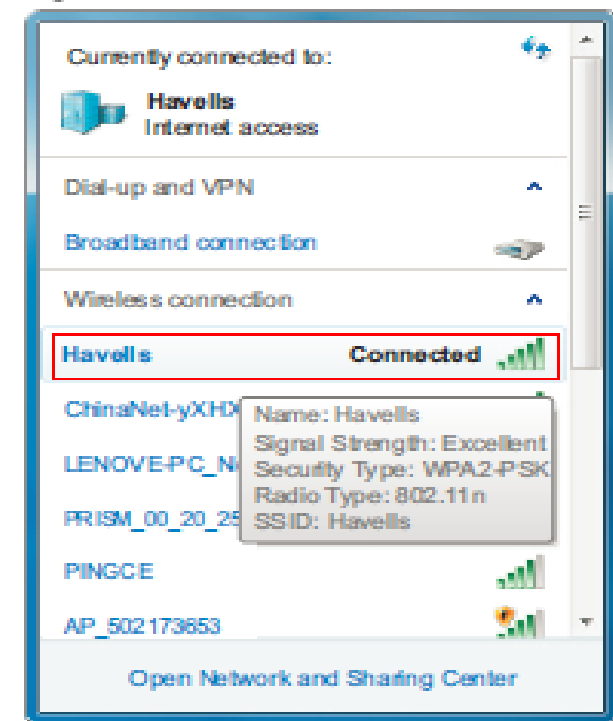
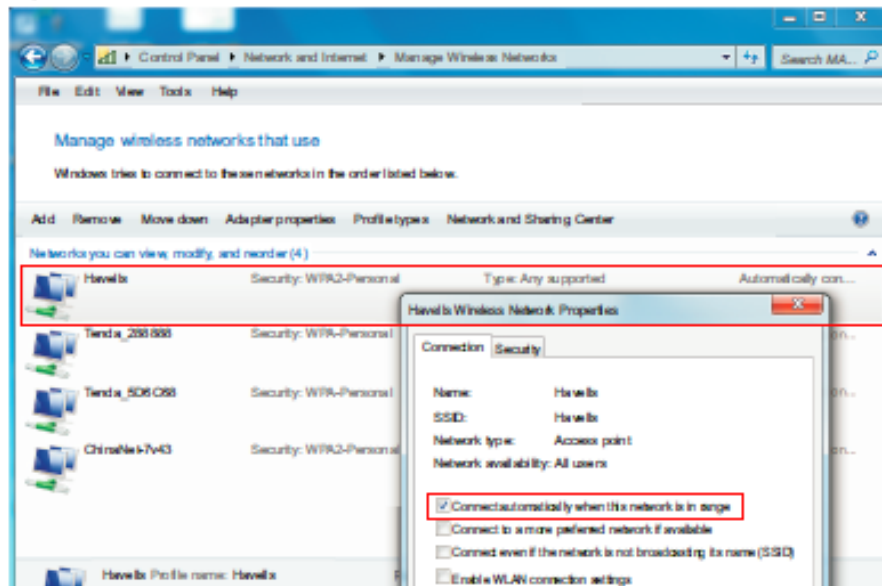
Enviro GTi Wi-Fi Setup

Procedure

Step 12 : Setup of wireless network connection priority and connection mode.

Open control panel > network and sharing center> manage wireless networks, set your home routers access point as default to connect with your personal computer automatically. Make sure it has the highest priority. To the device Wi-Fi module, set its AP as default to connect with your personal computer manually.

Step 13. :Connect with your personal wireless network or WLAN.



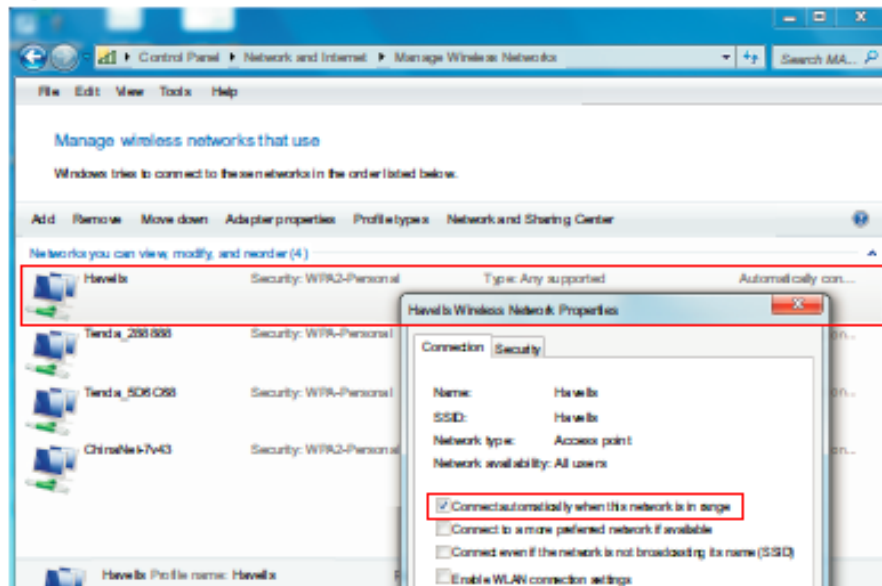
Enviro GTi Wi-Fi Setup

Procedure

Step 12 : Setup of wireless network connection priority and connection mode.

Open control panel > network and sharing center> manage wireless networks, set your home routers access point as default to connect with your personal computer automatically. Make sure it has the highest priority. To the device Wi-Fi module, set its AP as default to connect with your personal computer manually.

Step 13. :Connect with your personal wireless network or WLAN.



Create Account on portal

- Please kindly enter into <http://pvcheck.havells.com/login.html> website.
- Click on Register now if you do not have an account.
- Fill in basic registration information upon request.
- Fill in details to complete the registration.
- If Registration is successful, then below page will be display. Click OK to return to homepage of the portal.

Login - PV Monitoring x +

← → ↻ 🏠 ⓘ Not secure | pvcheck.havells.com/login.html ☆ ⓘ ⋮

HAVELLS

Login Register

E-mail/Phone Number

Password

Login

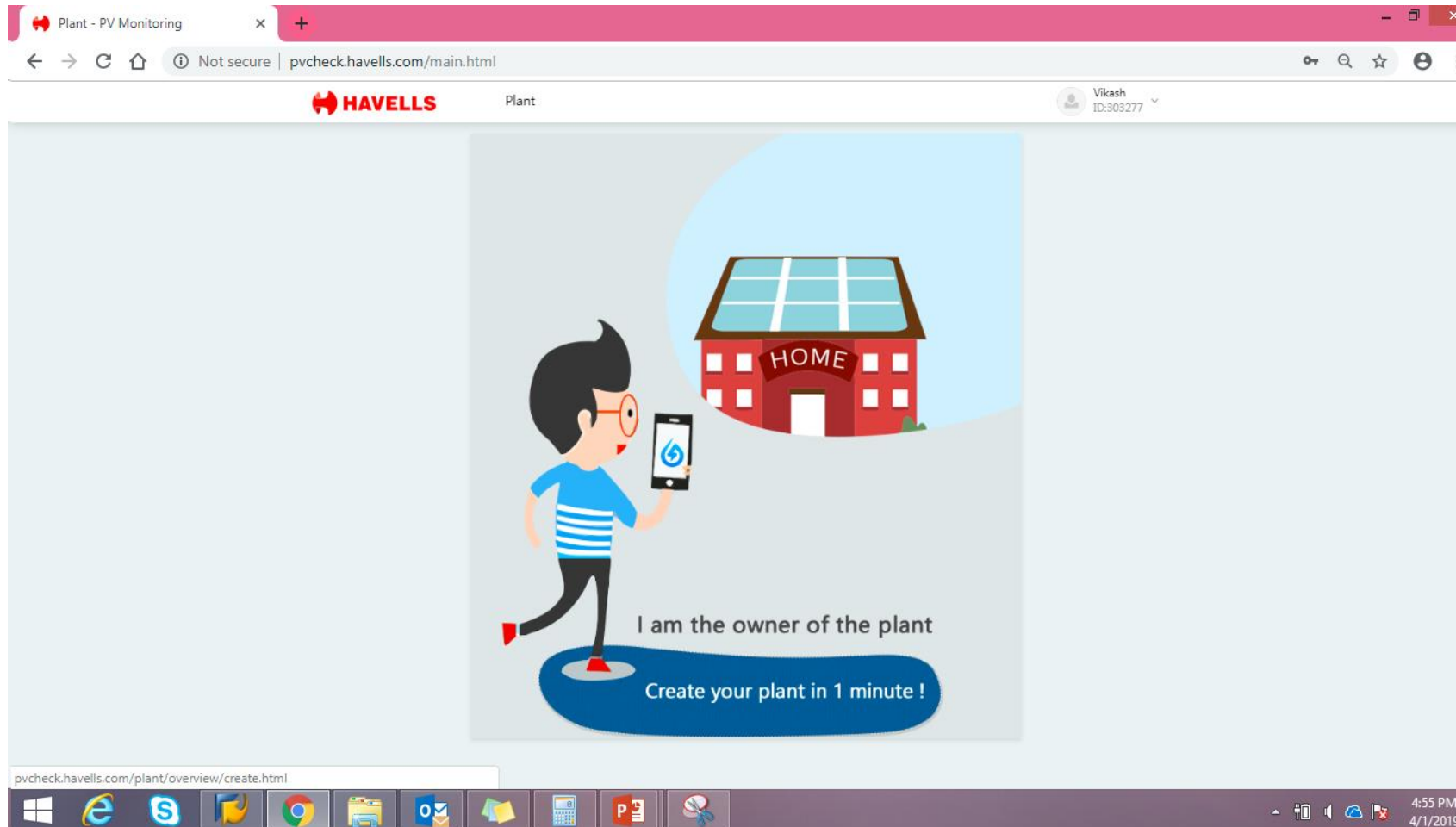
☐ Auto Login Next Time Login Problem

Current Version V2.1.13
Chrome58+, Firefox49+ are Recommended

Windows taskbar: 3:35 PM 4/1/2019

How to Build a new plant

Step 1 : After Login, Create the Plant by clicking the below screen.



How to Build a new plant

Step 2 : Fill Plant Name , Project type, ON Grid Type & Location.

Plant - PV Monitoring

Not secure | pvcheck.havells.com/main.html

Vikash ID:303277

1 Confirm Plant Description

2 Confirm Correlation Info

Plant Name: home

Plant Type:

- ☒ Residential Rooftop
- ☐ Commercial Rooftop
- ☐ Industrial Rooftop
- ☐ Utility-scale Rooftop

Grid-connected Type:

- ☒ Distributed All Power on Grid
- ☒ Distributed Self-use Residual Power on Grid
- ☐ Off-grid
- ☐ Storage System
- ☐ Utility-scale All Power on Grid

Plant Location:

Hauz Khas, New Delhi, Delhi, India

St. Mary's Orthodox Cathedral
Axis Bank
Paul's School
Anagram Architects
Rwandan High Commission

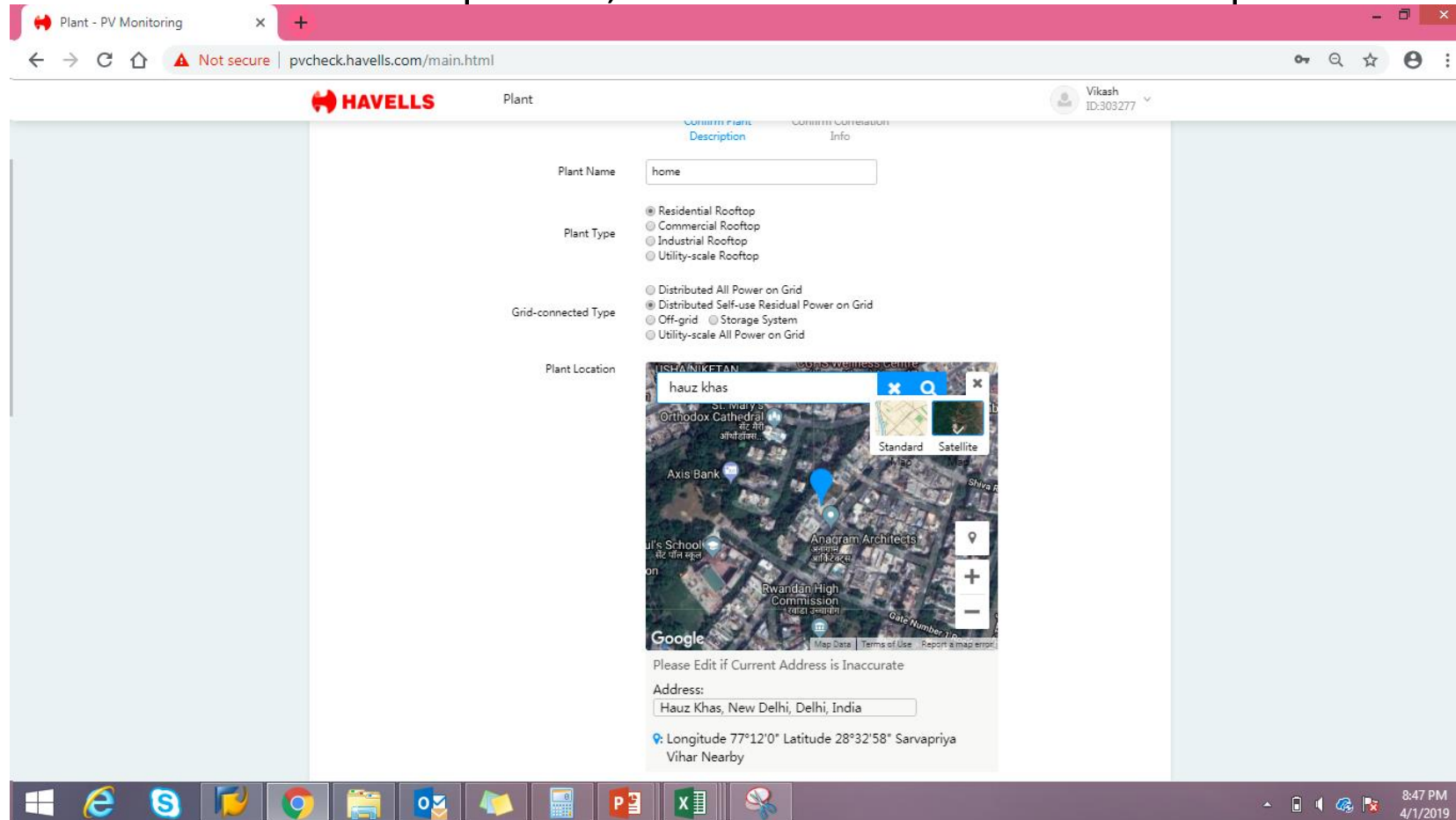
Google Map data ©2019 Google Terms of Use Report a map error

Please Edit if Current Address is Inaccurate

Address: Hauz Khas, New Delhi, Delhi, India

How to Build a new plant

Step 3: click Satellite and switch to map mode, convenient to describe roof shape.



How to Build a new plant

Step 4 : fill rest details and click on next.

Plant - PV Monitoring x +

Not secure | pvcheck.havells.com/main.html

HAVELLS Plant Vikash ID:303277

Capacity (kWp) 5.00

Plant Time Zone (UTC+05:30) Chennai,Kolkata,Mumbai,...

Azimuth (°) 180°

Angle of Tilt (°) 0°

Currency INR

Average Electricity Price(INR/kWh) 3.50

Desulphurization Feed-in Tariffs(INR/kWh) 1.5

Generation National FIT(INR/kWh) 0 Period (yr) 0

Generation Province FIT(INR/kWh) 0 Period (yr) 0

Generation City FIT(INR/kWh) 0 Period (yr) 0

Generation County 0 Period (yr) 0

8:52 PM 4/1/2019

Plant - PV Monitoring x +

Not secure | pvcheck.havells.com/main.html

HAVELLS Plant Vikash ID:303277

Generation City FIT(INR/kWh) 0 Period (yr) 0

Generation County FIT(INR/kWh) 0 Period (yr) 0

Constructing Cost(INR) 37500.00

Constructing FIT(INR) 0

Loan Proportion (%) 0%

Annual Loan Rate (%) 0 Period (yr) 0

Refund Method ☒ Fixed Basis Mortgage ☐ Fixed Payment Mortgage

Contact Number 0000000000

Next

8:52 PM 4/1/2019

How to Build a new plant

Step 5:

Click “Complete ”and system will lead you a question that “ do you want to add a new device now ?”, if you know the data logger’s SN, we recommend you click “yes” and system will lead you to “Add a New Device” and type the data logger SN numbers one by one.

The screenshot displays the HAVELLS enviro web application interface. The browser address bar shows the URL: `pvcheck.havells.com/main.html?class=plant&subClass=overview&page=view`. The user is logged in as Vikash (ID:303277). The main navigation bar includes 'home', 'Add New Device', 'Plant Settings', and 'Delete Plant'. The 'Details' tab is active, showing a 'Real-time' section with icons for a solar panel, a house, and a power line. A modal window titled 'Add New Device' is open, featuring a 'Device Type' dropdown menu set to 'Logger', a red question mark icon, and input fields for 'SN' and 'Operation'. The 'SN' field is currently empty, and the 'Operation' field contains the text '(Not Available)'. There are 'Add' and 'Import' buttons next to the 'SN' field. The background shows a 'Plant Info' section with a photo of a house and a 'Local Weather' section for Delhi showing 30°C and Haze. The Windows taskbar at the bottom shows the date as 2019/04/01 and the time as 8:56 PM on 4/1/2019.

Adding Inverter to plant

Step 1:

Click “device “ at top and click on inverter to put the inverter Serial number.

Step 2

Fill the full information of basic parameters. If window ask for information. & Save.

The screenshot displays the HAVELLS enviro web application interface. The browser address bar shows the URL: `pvcheck.havells.com/main.html?class=plant&subClass=overview&page=view`. The user is logged in as Vikash (ID:303277). The main navigation bar includes 'home', 'Add New Device', 'Plant Settings', and 'Delete Plant'. The 'Device' tab is selected, and the 'Add New Device' modal window is open. The modal contains the following fields and options:

- Device Type:** A dropdown menu currently set to 'Logger'.
- SN:** A text input field for the Serial Number.
- Buttons:** 'Add' and 'Import' buttons are located next to the SN field.
- Operation:** A text input field, currently displaying '(Not Available)'.

The background of the application shows a 'Plant Info' section with details like 'DelhiSouth DelhiNew DelhiHauz Khas EnclaveBlock KK70/9' and 'Residential Rooftop'. The bottom of the screen features a Windows taskbar with various application icons and a system clock showing 8:56 PM on 4/1/2019.

Saving & Uploading data

- After finishing adding, plant will be “under construction”.
- The system is waiting for data logger to upload data. Please ensure data logger is powered on and normal connection between inverter and data logger.
- Data logger will take time to upload the data to server , data will update after 10 minutes.

