



**HAVELLS**

# LET THE SUN POWER YOUR ROOF AND BUSINESS



**HAVELLS SOLAR GRID-TIE INVERTER 1 kW TO 350 kW**

# ABOUT US

## Redefining the modern homes with innovation and excellence

Havells is at the forefront of transforming modern living spaces by offering innovative solutions that elevate everyday experiences. With a deep understanding of consumer needs, the company has expanded its footprint across every aspect of home life, creating environment that are not only functional but also comfortable, stylish, and future-ready. To make these solutions accessible, Havells leverages an extensive distribution network encompassing 18,000 dealers, over 1,000 exclusive brand stores, intensifying presence in modern retail, e-commerce and quick commerce.

The company's portfolio includes power brands like Havells, Havells Crabtree, Lloyd, REO, Havells Studio, and Standard each designed to cater to the unique demands of today's consumers.

Anchored in the 'Make in India' initiative, Havells operates 16 cutting-edge manufacturing facilities across India, producing 90% of its products in-house. At the forefront of Havells product evolution lies its Customer Experience & Designs (CXD) Studio, where creativity and user-centric design converge. This is complemented by its Centre for Research & Innovation (CRI), supported by four advanced R&D centres, enabling Havells to consistently deliver products that are both functional and visually compelling.

Driven by a commitment to innovation, quality, and design, the company also upholds sustainable practices throughout its operations, including eco-friendly manufacturing processes and energy-efficient product design, contributing to a greener and more sustainable future.



CORPORATE OFFICE, NOIDA



State-of-the-Art Manufacturing Unit



Industry 4.0 Process



Center For Research & Innovation



Customer Experience & Design



**16** Manufacturing Units

**~18000** Strong Dealer Network

**4** Research Centres

**48** Offices

# ENVIRO GTI SINGLE PHASE AND THREE PHASE



- Models - Enviro GTi 1.1 KT G3, 2.2 KT G3, 3.3 KT G3, 4 KT G3
- BIS and IEC Certified
- Single Phase Single MPPT suitable for Residential application
- High efficiency inverter up to 97.7 %
- Built-in Zero Export Feature
- WiFi / GPRS Data logger, RS485
- USB port for software update

IS 16221 (PART 2):2015/IEC 62109-2 :2011  
IS 16169 :2014/IEC 62116 :2008



R-41165239

[www.bis.gov.in](http://www.bis.gov.in)



- Models - Enviro GTi 4000 D - NG, 5000 D - NG, 6000 D - NG.
- IEC Certified
- High efficiency inverter up to 98.4 %
- Built-in Zero Export Feature
- 1.5 times DC Over loading per MPPT
- WiFi / GPRS Data logger USB Type
- Online Software Upgrade



- Models - Enviro GTi 5000 TX NG - 5 kW, 6600 TX NG - 6 kW, 8800 TX NG - 8 kW, 11000 TX NG - 10 kW
- IEC Certified
- 1.5 times DC Over loading per MPPT
- High efficiency inverter up to 98.6 %
- Maximum DC input Voltage 1100 V
- Inbuilt type II-SPD for DC & AC Side
- String Level Monitoring
- Online Software Upgrade
- WiFi / GPRS Data logger USB Type



- Models - Enviro GTi 15 KT NG - 15 kW, 20 KT NG - 20 kW, 24 KT NG - 24 kW.
- IEC Certified
- 1.5 times DC Over loading per MPPT
- High efficiency inverter up to 98.6 %
- Maximum DC input Voltage 1100 V
- Inbuilt type II - SPD for DC & AC Side
- String Level Monitoring
- Online Software Upgrade
- WiFi / GPRS Data logger USB Type

IS 16221 (PART 2):2015/IEC 62109-2 :2011  
IS 16169 :2014/IEC 62116 :2008



R-41165239

[www.bis.gov.in](http://www.bis.gov.in)



- Models - Enviro GTi 25 KT NG - 25 kW, 30 KT NG - 30 kW, 40 KT NG - 40 kW, 50 KT NG - 50 kW,
- IEC Certified
- 3 / 4 MPPT with 1.5 times DC Overloading
- Maximum DC input Voltage 1100 V
- High efficiency inverter up to 98.9 %
- Inbuilt type II-SPD for DC & AC Side
- String Level Monitoring
- Online Software Upgrade
- WiFi / GPRS Data logger USB Type



- Models - Enviro GTi 60 KT NG - 60 kW, 80 KT NG - 80 kW,
- IEC Certified
- 6 MPPT with 1.5 times DC Overloading
- Maximum DC input Voltage 1100 V
- High efficiency inverter up to 98.7 %
- Inbuilt type II - SPD for DC & AC Side
- String Level Monitoring
- Online Software Upgrade
- WiFi / GPRS Data logger USB Type
- Anti - Reverse Power control-Optional



- Models - Enviro GTi 100 KT-NG- 100 kW & 110 KT-NG - 110 kW
  - IEC Certified
  - 10 MPPT with 1.5 times DC Overloading
  - Inbuilt type II - SPD for DC & AC & DC Switch
  - High efficiency inverter up to 98.7 %
  - String Level Monitoring
  - Online Software Upgrade
  - WiFi / GPRS Data logger USB Type
  - Anti - Reverse Power control-Optional
- 



- Models GTI125KT-NG - 125kW
  - IEC Certified
  - 10 MPPT with 1.4 times DC overloading
  - Inbuilt Type II- SPD DC& AC both
  - High Efficiency inverter upto 98.6%
  - Online Software Upgrade
  - RMS GPRS/wi-fi
- 



- Models - GTi 255 KT-NG- 255 kW,
  - IEC Certified
  - 12 MPPT with 1.4 times DC overloading
  - Inbuilt type II - SPD for DC & AC & DC Switch
  - High efficiency inverter up to 98.7 %
  - String Level Monitoring
  - Online Software Upgrade
  - WiFi / GPRS Data logger USB Type
  - Anti - Reverse Power control-Optional
-



- Models -GTI 350KT-HV - 350kW
- IEC Certified
- 8 MPPT with 1.4 times DC overloading
- Inbuilt type II - SPD for DC & AC Switch
- High efficiency inverter up to 99.05%
- Online Software Upgrade
- RMS Wi-fi/GPRS



# ENVIRO GTI SINGLE PHASE AND THREE PHASE

DATASHEET		Enviro GTi 1.1 KT G 3	Enviro GTi 2.2 KT G 3	Enviro GTi 3.3 KT G 3	Enviro GTi 4 KT G 3
<b>Input (DC)</b>					
Max. Input Voltage	500 V		550 V		
Rated Input Voltage	360 V				
Start-up Voltage	70 V				
MPPT Operating Voltage Range	50-500 V		50-550 V		
Number of MPP Trackers	1				
Number of DC Inputs	1				
Max. Input Mppt Current	13 A	14 A	15 A		
Max. Input Short Circuit Current	17.5 A		20 A		
<b>Output (AC)</b>					
Rated Output Power	1100 W	2200 W	3300 W	4000 W	
Max. Apparent Power	1100 VA	2200 VA	3300 VA	4000 VA	
Max. Output Current	5.3 A	10.6 A	16 A	19.3 A	
Rated Output Voltage	L/N/PE, 220 Vac, 230 Vac				
Output Voltage Range	180 Vac - 276 Vac				
Rated Output Frequency	50 / 60 Hz				
Output Frequency Range	45 Hz - 55 Hz / 55 Hz - 65 Hz				
Active Power Adjustable Range	0-100 %				
THDi	<3 %				
Power Factor	0.8 leading - 0.8 lagging				
<b>Efficiency</b>					
Max. Efficiency	97.30 %		97.70 %		
European Efficiency	96.70 %		97.20 %		
<b>Protection</b>					
DC Reverse Polarity Protection	Yes				
Anti-Islanding Protection	Yes				
Leakage Current Protection	Yes				
Ground Fault Monitoring	Yes				
PV-Array String Fault Monitoring	Yes				
DC Switch	No				
SPD	PV: Type III, AC: Type III				
<b>General Data</b>					
Ambient Temperature Range	-30 °C to +60 °C				
Self-Consumption at Night	<1W				
Topology	Transformerless				
Degree of Protection	IP65				
Allowable Relative Humidity Range	0-100 %				
Max. Operating Altitude	2000m				
Cooling	Natural				
Dimension (W*H*D)	303*260.5*118 mm		321*260.5*131.5 mm	321*260.5*151.5 mm	
Weight	≤6 kg		≤7 kg	≤7.3 kg	
Display	LCD + LED				
Communication	RS485 / Wi-Fi / GPRS ( Optional )				
Certifications	BIS & IEC Certified				

\*Max. DC Overloading upto 30% recommended.

\*All specifications are subject to change without notice.

# TECHNICAL SPECIFICATION OF SINGLE PHASE SOLAR GRID TIE INVERTER

DATASHEET	Enviro GTi 4000 D-NG	Enviro GTi 5000 D-NG	Enviro GTi 6000 D-NG
<b>Input (DC)</b>			
Recommended Max. PV input power	6000 Wp	7500 Wp	9000 Wp
Max. DC power for single MPPT	3500 W	3750 W	4500 W
Number of MPP trackers	2		
Number of DC inputs	1 for each MPPT		
Max. Input voltage	600 V		
Start-up voltage	90 V		
Rated input voltage	380 V		
MPPT operating voltage range	80 V - 550 V		
Full power MPPT voltage range	200 V - 500 V	210 V - 500 V	260 V - 500 V
Max. Input MPPT current	15 A / 15 A		
Max. input short circuit current per MPPT	22.5 A / 22.5 A		
<b>Output (AC)</b>			
Rated Power	4000 W	5000 W	6000 W
Max. AC Power	4400 VA	5500 VA	6000 VA
Nominal output current	18.2 A	22.7 A	27.3 A
Max. Output current	20 A	25 A	29 A
Nominal grid voltage	L/N/PE, 220 Vac, 230 Vac, 240 Vac		
Grid voltage range	180 Vac-276 Vac (According to local standard)		
Nominal frequency	50 Hz / 60 Hz		
Grid frequency range	45 Hz - 55 Hz (According to local standard)		
Active power adjustable range	0~100 %		
THDi	<3 %		
Power factor	1 default (adjustable+/-0. 8)		
<b>Performance</b>			
Max. efficiency	98.2 %	98.4 %	98.4 %
European efficiency	97.3 %	97.5 %	97.5 %
<b>Protection</b>			
DC Reverse Polarity Protection	Yes		
DC Switch	optional		
AFCl protection	optional		
Protection class/overvoltage category	I / III		
Safety protection	Anti islanding, RCMU, Ground fault monitoring		
SPD	MOV: Type III standard		
<b>Communication</b>			
Standard communication mode	RS485 / USB, Optional: WiFi / GPRS		
<b>General Data</b>			
Ambient temperature range	-30 °C~+60 °C		
Self-consumption at night	<1 W		
Topology	Transformerless		
Degree of protection	IP65		
Allowable relative humidity range	0~100 %		
Max. Operating altitude	4000 m		
Noise	<25 dB		
Weight	9.2 kg	10 kg	10 kg
Cooling	Natural		
Dimension	349 mm x 344 mm x 164 mm		
Display	LCD		
Warranty	10 years		
EMC	EN 61000-6-1, EN 61000-6-2, EN 61000-6-3, EN 61000-6-4,		
Safety standards	IEC 62116, IEC 61727, IEC 61683, IEC 60068 (1,2,14,30), IEC 62109-1/2		

# ENVIRO GTI SINGLE PHASE AND THREE PHASE

DATASHEET	Enviro GTi 5500 TX-NG	Enviro GTi 6000 TX-NG	Enviro GTi 8800 TX-NG	Enviro GTi 11000 TX-NG
<b>Input (DC)</b>				
Recommended Max. PV input power	7500 Wp	9000 Wp	12000 Wp	15000 Wp
Number of MPP trackers	2			
Number of DC inputs	1/1	1/1	1/1	1/1
Max. Input voltage	1100 V			
Start-up voltage	160 V			
Rated input voltage	650 V			
MPPT operating voltage range	140 V -1000 V			
Full power MPPT voltage range	240 V - 850 V	290 V - 850 V	380 V - 850 V	420 V - 850 V
Max. Input MPPT current	15 A / 15 A	15 A / 15 A	15 A / 15 A	15 A / 15 A
Max. input short circuit current per MPPT	22.5 A / 22.5 A	22.5 A / 22.5 A	22.5 A / 22.5 A	22.5 A / 22.5 A
<b>Output (AC)</b>				
Rated Power	5000 W	6000 W	8000 W	10000 W
Max. AC Power	5500 VA	6600 VA	8800 VA	11000 VA
Max. Output current	8.3 A	10 A	13.3 A	16.7 A
Nominal grid voltage	3 / N / PE, 220 V / 380 Vac, 230 V / 400 Vac			
Grid voltage range	310 Vac - 480 Vac ( According to local standard )			
Nominal frequency	50 Hz / 60 Hz			
Grid frequency range	45 Hz - 55 Hz (According to local standard)			
Active power adjustable range	0~100 %			
THDi	<3 %			
Power factor	1 default (adjustable+/-0. 8)			
<b>Performance</b>				
Max. efficiency	98.40 %	98.40 %	98.50 %	98.50 %
European efficiency	97.50 %	97.50 %	98.00 %	98.00 %
<b>Protection</b>				
DC Reverse Polarity Protection	Yes			
Anti-islanding protection	Yes			
Leakage current protection	Yes			
Ground fault monitoring	Yes			
PV-array string fault monitoring	Yes			
Anti reverse power function	Yes			
DC switch	Yes			
AFCI protection	Optional			
Input / output SPD	PV: type II standard, AC: type II standard			
<b>Communication</b>				
Standard communication mode	RS485 / USB / Bluetooth, Optional: WiFi / GPRS			
<b>General Data</b>				
Ambient temperature range	-30 °C~+60 °C			
Self-consumption at night	<1 W			
Topology	Transformerless			
Degree of protection	IP65			
Allowable relative humidity range	0~100 %			
Max. Operating altitude	4000 m			
Noise	<40 dB			
Weight	17 kg	17 kg	18 kg	18 kg
Cooling	Natural			
Dimension	430 mm x 385 mm x 82 mm			
Display	LCD			
Standard warranty	10 years			
<b>Standard</b>				
EMC	EN61000-3-2, EN61000-3-3, EN61000-3-11, EN61000-3-12, EN61000-6-1, EN61000-6-3			
Safety standards	IEC62109-1/2, IEC62116, IEC61727, IEC61683, IEC60068 (1,2,14,30)			

# TECHNICAL SPECIFICATION OF SINGLE PHASE SOLAR GRID TIE INVERTER

DATASHEET	Enviro GTi 15 KT-NG	Enviro GTi 20 KT-NG	Enviro GTi 24 KT-NG
<b>Input (DC)</b>			
Recommended Max. PV input power	22500 Wp	30000 Wp	36000 Wp
Number of MPP trackers	2		
Number of DC inputs	2/2		
Max. Input voltage	1100 V		
Start-up voltage	160 V		
Rated input voltage	650 V		
MPPT operating voltage range	140 V - 1000 V		
Full power MPPT voltage range	420 V - 850 V	480 V - 850 V	540 V - 850 V
Max. Input MPPT current	26 A / 26 A	26 A / 26 A	26 A / 26 A
Max. input short circuit current per MPPT	36 A / 36 A	36 A / 36 A	36 A / 36 A
<b>Output (AC)</b>			
Rated Power	15000 W	20000 W	24000 W
Max. AC Power	16500 VA	22000 VA	26400 VA
Max. Output current	23.9 A	31.9 A	38.3 A
Nominal grid voltage	3 / N / PE, 220 V / 380 Vac, 230 V / 400 Vac		
Grid voltage range	310 Vac - 480 Vac ( According to local standard )		
Nominal frequency	50 Hz / 60 Hz		
Grid frequency range	45 Hz - 55 Hz ( According to local standard )		
Active power adjustable range	0~100 %		
THDi	<3 %		
Power factor	1 default ( adjustable +/-0.8 )		
<b>Performance</b>			
Max. efficiency	98.60 %		
European efficiency	98.20 %		
<b>Protection</b>			
DC Reverse Polarity Protection	Yes		
Anti-islanding protection	Yes		
Leakage current protection	Yes		
Ground fault monitoring	Yes		
PV-array string fault monitoring	Yes		
Anti reverse power function	Optional		
DC switch	Yes		
AFCI protection	Optional		
Input / output SPD	PV: type II standard, AC: type II standard		
<b>Communication</b>			
Standard communication mode	RS485 / USB / Bluetooth, Optional: WiFi / GPRS		
<b>General Data</b>			
Ambient temperature range	-30 °C~+60 °C		
Self-consumption at night	<1 W		
Topology	Transformerless		
Degree of protection	IP65		
Allowable relative humidity range	0~100 %		
Max. Operating altitude	4000 m		
Noise	<40 dB		
Weight	20 kg	22 kg	23 kg
Cooling	Fan		
Dimension	520 mm x 430 mm x 189 mm		
Display	LCD		
Standard warranty	10 years		
<b>Standard</b>			
EMC	EN61000-6-1, EN61000-6-3, EN61000-6-3-11, EN61000-6-3-12		
Safety standards	IEC62109-1/2, IEC62116, IEC61727, IEC61683, IEC60068 (1,2,14,30)		

# TECHNICAL SPECIFICATION OF SINGLE PHASE SOLAR GRID TIE INVERTER

DATASHEET	Enviro GTi 25 KT-NG	Enviro GTi 30 KT-NG	Enviro GTi 40 KT-NG	Enviro GTi 50 KT-NG
<b>Input (DC)</b>				
Recommended Max. PV input power	37500 Wp	45000 Wp	60000 Wp	75000 Wp
Max. DC power for single MPPT	20000 Wp			
Number of MPP trackers	3	3	4	4
Number of DC inputs	6	6	8	8
Max. input voltage	1100 V			
Start-up voltage	200 V			
Rated input voltage	620 V	620 V	620 V	620 V
MPPT operating voltage range	180 V - 1000 V			
Full power MPPT voltage range	480 V - 850 V	480 V - 850 V	480 V - 850 V	540 V - 850 V
Max. Input MPPT current	3*40 A		4*40 A	
Max. input short circuit current per MPPT	3*50 A		4*50 A	
<b>Output (AC)</b>				
Rated Power	25000 W	30000 W	40000 W	50000 W
Max. AC Power	28000 VA	34000 VA	44000 VA	55000 VA
Rated output current	37.9 A	45.5 A	60.6 A	75.8 A
Max. Output current	42.4 A	51.5 A	66.7 A	83.3 A
Nominal grid voltage	3 / N / PE, 220 / 380 Vac, 230 / 400 Vac, 240 / 415 Vac			
Grid voltage range	310 Vac - 480 Vac ( According to local standard )			
Nominal frequency	50 Hz / 60 Hz			
Grid frequency range	45 Hz - 55 Hz ( According to local standard )			
Active power adjustable range	0~100 %			
THDi	<3 %			
Power factor	1 ( adjustable+/-0.8 )			
<b>Efficiency</b>				
Max. efficiency	98.60 %	98.60 %	98.80 %	98.80 %
European efficiency	98.20 %			
<b>Protection</b>				
DC Reverse Polarity Protection	Yes			
Anti-islanding protection	Yes			
Leakage current protection	Yes			
Ground fault monitoring	Yes			
PV-array string fault monitoring	Yes			
Anti reverse power function	Yes			
DC switch	Yes			
AFCI protection	Optional			
Anti-PID function	Optional			
Input/ output SPD	PV : Type II standard, AC : Type II standard			
<b>Communication</b>				
Communication	RS485 / USB / Bluetooth, Optional: WiFi / GPRS			
<b>General Data</b>				
Ambient temperature range	-30 °C~+60 °C			
Self-consumption at night	<3 W			
Topology	Transformerless			
Degree of protection	IP65			
Allowable relative humidity range	0~100 %			
Max. Operating altitude	4000 m			
Noise	<60 dB			
Weight	36 kg		37 kg	
Cooling	Fan			
Dimension	585 mm x 480 mm x 220 mm			
Display	LCD			
Standard warranty	10 years			
<b>Standard</b>				
EMC	EN 61000-6-2, EN 61000-6-3, EN 61000-3-11, EN 61000-3-12			
Safety standards	IEC 62109-1/2, IEC 62116, IEC 61727, IEC 61683, IEC 60068 (1,2,14,30), IEC 60255			

# TECHNICAL SPECIFICATION OF SINGLE PHASE - NG SERIES

DATASHEET	Enviro GTi 60 KT - NG	Enviro GTi 80 KT - NG
<b>Input (DC)</b>		
Recommended max. input power (Wp)	90000 Wp	120000 Wp
Number of MPP trackers	6	
Number of DC inputs	2 per MPPT	
Max. input voltage (V)	1100	
Start-up voltage (V)	200	
Rated input voltage (V)	620	
MPPT operating voltage range (V)	180 - 1000	
Full power MPPT voltage range (V)	550 - 800	
Max. input MPPT current (A)	6*32 A	6*40 A
Max. input short circuit current (A)	6*50 A	6*60 A
<b>Output (AC)</b>		
Rated power (W)	60000 W	80000 W
Max. AC power (VA)	66000 VA	88000 VA
Max. output current (A)	100 A	133.3 A
Rated grid voltage	3 / N / PE, 230 / 400 Vac	
Grid voltage range	310 - 480 Vac ( according to local standard )	
Rated grid frequency	50 / 60 Hz	
Grid frequency range	45 Hz-55 Hz ( according to local standard )	
Active power adjustable range	0~100 %	
THDi	<3 %	
Power factor	1default ( adjustable+ / -0.8 )	
<b>Performance</b>		
Max. efficiency	98.70 %	
European efficiency	98.20 %	
<b>Protection</b>		
DC reverse polarity protection	Yes	
Anti-islanding protection	Yes	
Leakage current protection	Yes	
Ground fault monitoring	Yes	
PV-array string fault monitoring	Yes	
Anti reverse power function	Yes	
DC switch	Yes	
Input / output SPD	PV: type II standard, optional: type I. AC: type II standard	
<b>Communication</b>		
Communication	RS485 / Bluetooth Optional: WiFi / Ethernet	
<b>General Data</b>		
Ambient temperature range	-25 °C...+60 °C	
Self-comsumption at night (W)	< 2 W	
Topology	Transformerless	
Degree of protection	IP66	
Allowable relative humidity range	0-100 %	
Max. operating altitude	4000 m	
Weight	50 kg	
Cooling	Fan	
Dimension	687 mm x 561 mm x 275 mm	
Display	LCD	
Standard warranty	10 years	
<b>Standard</b>		
EMC	EN 61000-6-2, EN 61000-6-3, EN 61000-3-11, EN 61000-3-12	
Safety standards	IEC 62109-1/2, IEC 62116, IEC 61727, IEC 61683, IEC 60068 (1,2,14,30), IEC 60255	

# TECHNICAL SPECIFICATION OF THREE PHASE - NG SERIES

DATASHEET	Enviro GTi 100 KT -NG	ENVIRO GTI 110 KT-NG
<b>Input (DC)</b>		
Recommended max. input power (Wp)	150000 Wp	165000 Wp
Max. Input voltage	1100 V	
Rated input voltage	625 V	625 V
Start-up voltage	200 V	
MPPT operating voltage range	180 V - 1000 V	
Full power MPPT voltage range	500 - 850 V	500 - 850 V
Number of MPP trackers	10	
Number for DC inputs	20	
Max. input current per MPPT	32 A	
Max. input short circuit current per MPPT	50 A	
<b>Output (AC)</b>		
Rated Power	100 kW	110 kW
Max. AC Power	110 kVA	121 kVA
Max. Output Current	160 A	175 A
Nominal Grid Voltage	3 / N / PE, 230 V / 400 Vac	
Grid Voltage Range	310 - 480 Vac	
Nominal Frequency	50 Hz / 60 Hz	
Grid Frequency Range	45 Hz-55 Hz / 54 Hz - 66 Hz ( According to local standard )	
Active power adjustable range	0~100 %	
THDi	<3 %	
Power factor	1 default ( adjustable+ / -0.8 )	
<b>Performance</b>		
Max. efficiency	98.70 %	
European weighted efficiency	98.30 %	
MPPT efficiency	>99.9 %	
<b>Protection</b>		
DC reverse polarity protection	Yes	
Anti-islanding protection	Yes	
Leakage current protection	Yes	
Ground fault monitoring	Yes	
PV-array string fault monitoring	Yes	
DC switch	Yes	
Protection class/ Overvoltage category	I/III	
Input/ Output SPD	PV: type II standard, AC: type II standard	
Certification	IEC 62116, IEC 61727, IEC 61683, IEC 60068 ( 1, 2, 14, 30 ), IEC 62109-1/2, IEC 61000, IP65.	
<b>Communication</b>		
Power management unit	According to certification and request	
Communication	RS485, Optional: WiFi / GPRS	
<b>General Data</b>		
Ambient temperature range	-30 °C...+60 °C	
Topology	Transformerless	
Degree of Protection	IP66	
Allowable relative humidity range	0-100 %	
Max. operating altitude	4000 m	
Noise	<60 dB	
Weight	90 kg	
Cooling	Smart forced air cooling	
Dimension	995.5 mm x 693.5 mm x 368 mm	
Display	LCD	
Warranty	10 years	

# TECHNICAL SPECIFICATION OF THREE PHASE - NG SERIES

DATASHEET		ENVIRO GTI 125 KT-NG
<b>Input (DC)</b>		
Max. input voltage		1100 V
Rated input voltage		625 V
Start-up voltage		550 V
MPPT operating voltage range		200 V
Full power MPPT voltage range		180 V~1000 V
Number of MPP trackers		10
Number for DC inputs		20
Max. input current per MPPT		10* 40 A
Max. input short circuit current per MPPT		10* 50 A
<b>Output (AC)</b>		
Rated output power		125 kW
Maximum apparent power		125 KVA @ 45 deg C / 110 KVA @ 50 deg C
Max. Output current		190 A @ 380 V / 181.2 A @ 400 V / 174A @ 415 V
Nominal grid voltage		3 / N / PE, 380 V / 400 Vac / 415 V
Grid voltage range		310 - 480 Vac
Nominal frequency		50 Hz / 60 Hz
Grid frequency range		45 Hz-55 Hz / 55 Hz - 65 Hz ( According to local standard )
Active power adjustable range		0~100 %
THDi		<1 % ( @100%P )
Power factor		1 default ( adjustable+ / -0.8 )
<b>Performance</b>		
Max efficiency		98.60 %
European Weighted efficiency		98.30 %
<b>Protection</b>		
DC reverse polarity protection		Yes
Anti-islanding protection Yes		Yes
Leakage current protection		Yes
Ground fault monitoring Yes		Yes
PV-array string fault monitoring		Yes
DC switch		Yes
AFCI		Yes
Input/ Output SPD PV:		type II standard, AC: type II standard
Certifications* (applied)		"IEC 61727, IEC 61683, IEC 62116, IEC 60068, IEC 61000, IEC 62109, IP 65 "
<b>Communication</b>		
Power management unit		According to certification and request
Communication		RS485 / WiFi
<b>General Data</b>		
Ambient temperature range		-30 °C to +60 °C
Topology		Transformerless
Degree of Protection		IP66
Allowable relative humidity range		0-100 %
Max. operating altitude		4000 m ( >3000 m derating )
Weight		<75 kg
Cooling		Smart forced air cooling
Dimension		970 mm x 695 mm x 325 mm
Display		LCD
Warranty		standard warranty 10 years as per warranty policy

# TECHNICAL SPECIFICATION OF THREE PHASE SOLAR GRID TIE INVERTER

DATASHEET		ENVIRO GTI 255 kW- HV
<b>Input (DC)</b>		
Max. input voltage		1500 V
Rated input voltage		1080 V
Start-up voltage		550 V
MPPT operating voltage range		500 V~1500 V
Full power MPPT voltage range		800 V~1300 V
Number of MPP trackers		12
Number for DC inputs		24
Max. input current per MPPT		30A*12
Max. input short circuit current per MPPT		50A*12
<b>Output (AC)</b>		
Rated output power		255 kW
Maximum apparent power		255 kVA @30°C / 235 kVA@40 °C / 220 kVA @50 °C
Max. Output current		184 A
Nominal grid voltage		3 / PE, 800 Vac
Grid voltage range		640 Vac~920 Vac
Nominal frequency		50 Hz / 60 Hz
Grid frequency range		45~55Hz / 55~ 65Hz ( according to local standard )
Active power adjustable range		0~100 %
THDi		<3 %
Power factor		1 default (-0.8...+0.8 adjustable)
Power factor		1 default (-0.8...+0.8 adjustable)
<b>Performance</b>		
Max efficiency		99.02 %
European Weighted efficiency		98.5 %
MPPT efficiency		>99.9 %
Self-Consumption at night		< 2 W
<b>Standard</b>		
EMC		EN 61000-6-2, EN 61000-6-4 (under certification)
Safety standard		IEC62109-1/2, IEC62116, IEC61727, IEC-61683, IEC60068 (1,2,14,30) (under certification)
<b>Protection</b>		
DC reverse polarity protection		Yes
Anti-Islanding Protection		Yes
Leakage current protection		Yes
Ground fault monitoring		Yes
PV-array string fault monitoring		Yes
Zero voltage ride through		Yes
DC Switch		Yes
Anti-PID function		Optional
AFCI protection		Optional
Protection class/ overvoltage category		I/III
Input/ output SPD		PV: Type II standard, AC: Type II Standard
<b>Protection</b>		
Topology		Transformer less
Ambient temperature range		-30 °C~+60 °C
Relative humidity		0%-100 %
Cooling		Smart forced air cooling
Max. altitude		4000 m
Noise		≤60 dB
Mounting		Wall mount
Communication		WiFi / GPRS / RS485 / PLC / Bluetooth optional
Operation data storage		25 years
Display		LCD& Bluetooth
Self-consumption at night		<2 W
Degree of protection		IP66
Dimension		1100.5 mm × 713.5 mm × 368 mm
Weight		100 kg

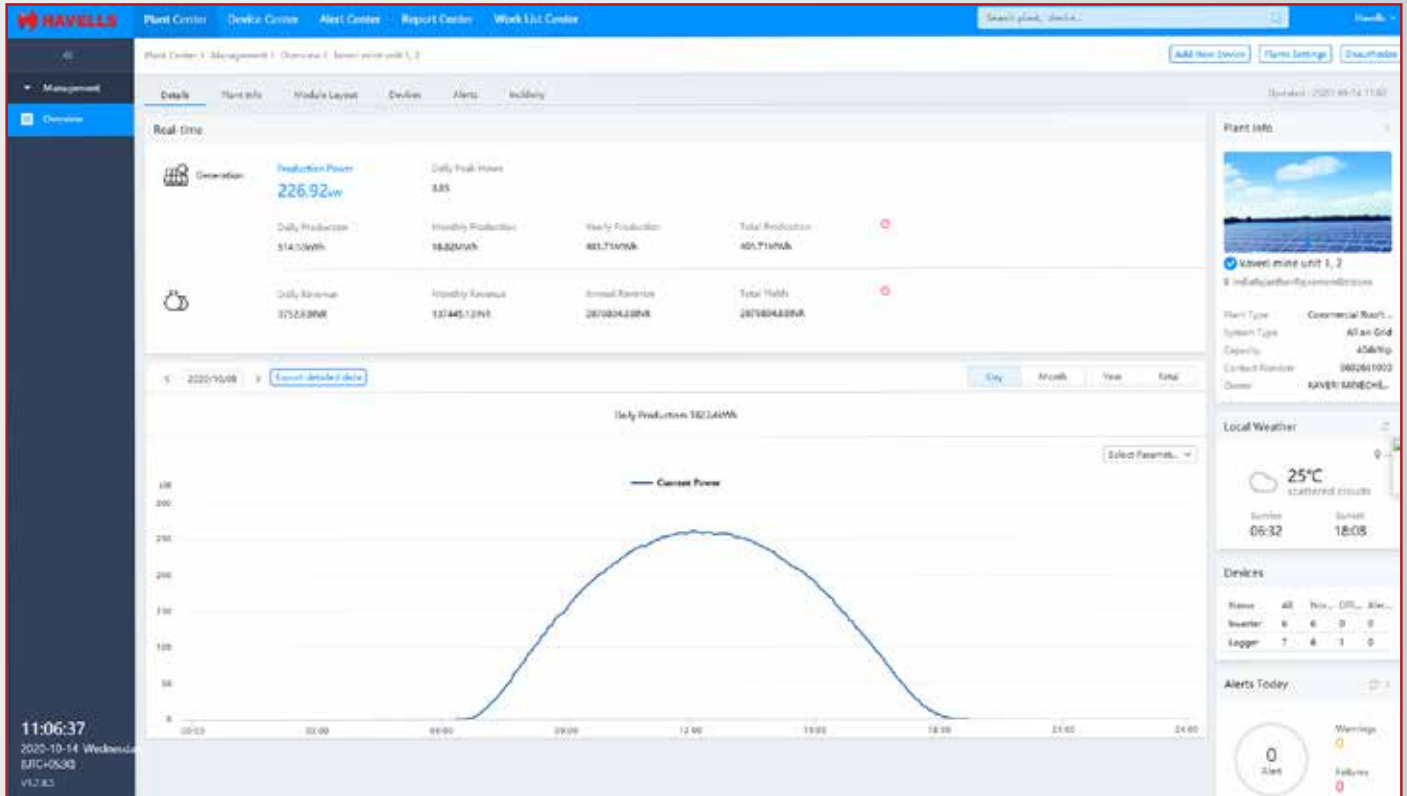
# TECHNICAL SPECIFICATION OF THREE PHASE-NG SERIES

DATASHEET		ENVIRO GTI 350 kW- HV
<b>Input (DC)</b>		
Max. Input voltage		1500 V
Rated input voltage		1160 V
Start-up voltage		550 V
MPPT operating voltage range		500 V -1500 V
Number of MPP trackers		8
Number for DC inputs		32
Max. input current per MPPT		8*60 A
Max. input short circuit current per MPPT		8*100 A
<b>Output (AC)</b>		
Rated output Power		352 kW
Max. apparent Power		352 kVA
Max. Output Current		254.1 A
Rated output Voltage		3/PE, 800 V
Output Voltage Range		640 - 920 Vac
Nominal Frequency		50 Hz / 60 Hz
Output Frequency Range		45 Hz-55 Hz / 55 Hz - 65 Hz ( According to local standard )
Active power adjustable range		0~100 %
THDi		<3 % ( @100 %P )
Power factor		1 default ( adjustable+ / -0.8 )
<b>Performance</b>		
Max. efficiency		99.05 %
European weighted efficiency		98.80 %
<b>Protection</b>		
DC reverse polarity protection		Yes
Anti-islanding protection Yes		Yes
Leakage current protection		Yes
Ground fault monitoring Yes		Yes
PV-array string fault monitoring		Yes
DC switch		Yes
Input/ Output SPD PV:		type II standard, AC: type II standard
Certifications* (applied)		"IEC 61727, IEC 61683, IEC 62116, IEC 60068, IEC 61000, IEC 62109, IP 65, CEA, EN50530"
<b>Communication</b>		
Power management unit		According to certification and request
Communication		RS485 / PBUS
<b>General Data</b>		
Topology		Transformer less
Ambient temperature range		-30 °C~+60 °C
Relative humidity		0%-100 %
Cooling		Smart forced air cooling
Max. altitude		4000 m
Noise		≤60 dB
Mounting		Wall mount
Communication		WiFi / GPRS / RS485 / PLC / Bluetooth optional
Operation data storage		25 years
Display		LCD & Bluetooth
Self-consumption at night		<2 W
Degree of protection		IP66
Dimension		1100.5 mm × 713.5 mm × 368 mm
Weight		100 kg

# TECHNICAL SPECIFICATION OF THREE PHASE-NG SERIES

## FEATURES

- Web based Remote monitoring
- User-friendly & easy access via Internet
- Real Time Data-logging and historical data storage for analysis
- Data availLevel with various graph and format options for easy understanding and analysis
- Automatic alarms for any malfunctions via Email





## REGIONAL & BRANCH OFFICES:

**NORTH - REGIONAL OFFICE: Corporate Office:** QRG Towers, 2D, Sector-126, Expressway, Noida-201304, Tel: 0120-3331000, **Delhi:** Tel: 011-47676700, 23888200, **Chandigarh:** Tel: 0172-4232400-401, **Dehradun:** Tel: 0135-6670202, **Haldwani:** Tel: 05946-222935/222933, **Noida / Haryana:** Tel: 0120-3331000, **Ludhiana:** Tel: 0161-4676000 / 24, **Amritsar:** Tel: 0183-5202400/401, **Jammu:** Tel: 0191-2478330, 2479330, **Sri Nagar:** Tel: 0194-2490431, **Jaipur:** Tel: 0141-3914645, 3988210, **Jodhpur:** Tel: 0291-9214201640/45, **Lucknow:** Tel: 0522-6672100, **Kanpur:** Tel: 0512-6710400, 6710409

**EAST - REGIONAL OFFICE: Kolkata:** ICC Tower, 5th Floor, 4 India Exchange Place, Kolkata-700001, Tel: 033-40129851 / 52, **Bhubaneswar:** Tel: 0674-6668101/102/103/104, **Guwahati:** Tel: 0361-2134521, 2458923, 2460355, **Siliguri:** Tel: 0353-2525907, **Ranchi:** 0651-2244861, 2244862, 2244864, 2244868, 2244869, **Jamshedpur:** Tel: 0657-6542492, 09234369436, **Patna:** Tel: 0612-2207221, 2207222, 2207223, 2655518

**WEST - REGIONAL OFFICE: Mumbai:** 14th Floor, Unit No. 1405- 1408, Lodha Supremus, I- Think Techno Campus, Kanjurmarg East, Mumbai- 400 042. Ph.: 022 - 67298600-601, **Ahmedabad:** Tel: 079-40061111, 40060738-740, **Indore:** Tel: 0731-2572340-41, 4009998 (Airtel), **Rajkot:** Tel: 0281-2481112, 2921212, **Nagpur:** Tel: 0712-2240932, 2242692, 2242699 **Pune:** Tel: 020-64016413 / 14, **Raipur:** Tel: 0771-4243400 / 01, **Surat:** Tel: 0261-2350137, 9979890137, **Jabalpur:** Tel: 0761-4064491, **Bhopal:** 0755-4271544, 0755-4011025

**SOUTH - REGIONAL OFFICE: Chennai:** Khivraj Complex -1, 1st Floor, No.480, Annasalai, Nandanam, Chennai – 600035 Phone: 044: 42280600, **Bangalore:** Tel: 080-49075000, **Coimbatore:** Phone: 0422- 4550200 / 287, **Hyderabad:** Tel: 040-27533372, 27533355, 27533632, 66320407/0408/6401/6402, **Kochi:** Tel: 0484-4099000, **Vizag:** Tel: 0891-6514339, **Vijayawada:** Tel: +91-9247058847/57, **Calicut:** 0495-4019194, **Trivandrum:** 0471-4015323, **Hubli:** 09448146028

**Representative Offices:** • Goa • Solapur • Gwalior • Kathmandu • Kolhapur • Vadodara

"Actual products may vary in colour, design, description and colour combination etc. Although every effort has been made to ensure accuracy in the compilation of the technical detail within this publication. Specifications & performance data are constantly changing."



# HAVELLS

**Havells India Ltd.**

QRG Towers, 2D, Sector -126, Expressway, Noida - 201 304 (UP), Ph. +91-120-3331000,  
E-mail: [marketing@havells.com](mailto:marketing@havells.com), [www.havells.com](http://www.havells.com)  
Customer Care No. 08045 77 1313

Join us on Facebook at [www.facebook.com/havells](http://www.facebook.com/havells) and share your ways to save the planet!

**CIN - L31900DL1983PLC016304.**

Copyright Subsists. Imitation of trade dress, graphics and color scheme of this document is a punishable offence.

Scan the QR Code  
to download  
**Havells**  
**Solar mCatalogue**

